



American Marine & Boat Sales
The Power Boat Specialists

NICK KATSOULIS
American Marine & Boat Sales
58 R Merrimac St. 2nd floor
Newburyport, MA, US
Office: 978-462-2323
Mobile: 978-462-2323
nick@usedpowerboats.com

2008 Jeanneau Prestige 34S Hardtop

Boat Type: Express Cruiser

Address: Swansea, MA, US

Price: \$135,000



OVERVIEW

" Another Adventure " perfect example of another successful model produced by Jeanneau. This boat has a very stylish and sporty appearance from the exterior but yet is deceptively spacious with it's two cabins, saloon and galley inside. Kept in excellent condition and with only 746 hrs on her Volvo-Penta D4 which have been meticulously maintained . The current owner has spent a lot of time , effort and money keeping her in this condition . Full electronics' package with Raymarine radar and 9" Axiom MFD (2020) , Bow thruster and a Onan 5kw Generator with only 180 hrs . Bottom stripped and blasted and repainted in 2023 . A great value for the money. Seller will sell when his new boat arrives , est arrival May 2025 .Have your land survey done asap . **This is the only one currently listed in the U.S.**
Shown by appointment only , You won't be disappointed . Call Today !!

SPECIFICATIONS

Basic Information

Manufacturer:	Jeanneau	Vessel Name:	Another Adventure
Model:	Prestige 34S Hardtop	Boat Type:	Express Cruiser
Year:	Prestige 34S Hardtop	Hull Material:	Fiberglass
Category:	Power	Hull Type:	Modified Vee
Condition:	Used	Hull Color:	white
Location:	Swansea, MA, US	Designer:	
Available for sale in U.S. waters:	Yes	Flag of Registry:	

Dimensions & Weight

Length:	34 ft - 10.36 meter	Draft - max:	-
LOA:	34 ft 6 in - 10.52 meter	Bridge Clearance:	12 ft - 3.66 meter
Beam:	11 ft 9 in - 3.58 meter	Dry Weight:	12500 ft - 3810 meter

Engine

Make:	Volvo Penta	Engine Type:	Inboard / Outboard
Model:	D4	Drive Type:	
Engine(s):	2	Fuel Type:	Diesel
Hours:	746	Horsepower:	260 (Individual), 520 (combined)
Cruise Speed:	28 MPH	Max Speed:	37 MPH
Range:	-	Joystick Control:	No

Tank Capacities

Fuel Tank:	185 gallons - 1 tank(s)	Holding Tank:	16 gallons - 1 tank(s)
Fresh Water Tank:	66 gallons - 1 tank(s)		

Accommodations

Total Cabins:	2	Crew Cabins:	-
Total Berths:	-	Crew Berths:	-
Total Sleeps:	6	Crew Sleeps:	-
Total Heads:	1	Crew Heads:	-
Captains Cabin:	-		

DESCRIPTIONS

Dimensions

- Length overall: 34'6"
- Beam: 11'11"
- Draft: 3'0"
- Displacement: 12,500
- Diesel: 185 Gal
- Fresh water: 66 gal

Mechanical & Electrical

- 2 x 260 hp Volvo Penta D4-260/DP EVC diesel engines give 37 mph maximum speed & 28 mph cruising.
- Onan 5k generator
- (2) reverse cycle heat and A/c units
- Hard top
- Drop down helm step
- Full instrumentation and single lever controls
- Maxpower bowthruster
- QL trim tabs
- Power assisted hydraulic steering with VDO helm indicator
- 12 volt DC electrical system (4 batteries) AGM with isolators 2021
- 120 volt 30 amp AC shore power supply and 25 Ah battery charger
- Hot and cold pressurised fresh water system with transom shower
- Holding tank
- Lewmar electric anchor windlass with deck and console controls
- Electric bilge pump
- Power operated engine compartment hatch
- Windscreen wipers / washers (2)
- Horn
- Overhead cockpit lights
- Engine compartment light
- Stereo radio / CD player with saloon and cockpit speakers
- Remote controlled fire extinguishing system in engine compartment

Navigation Equipment

- Raymarine Axiom color radar / chartplotter , NEW IN 2020
- Raymarine radome scanner
- Raymarine ST60+ Tridata speed and depthsounder
- Raymarine ST6002 Smartpilot autopilot
- Raymarine ray 240
- Plastimo compass
- Navigation lights

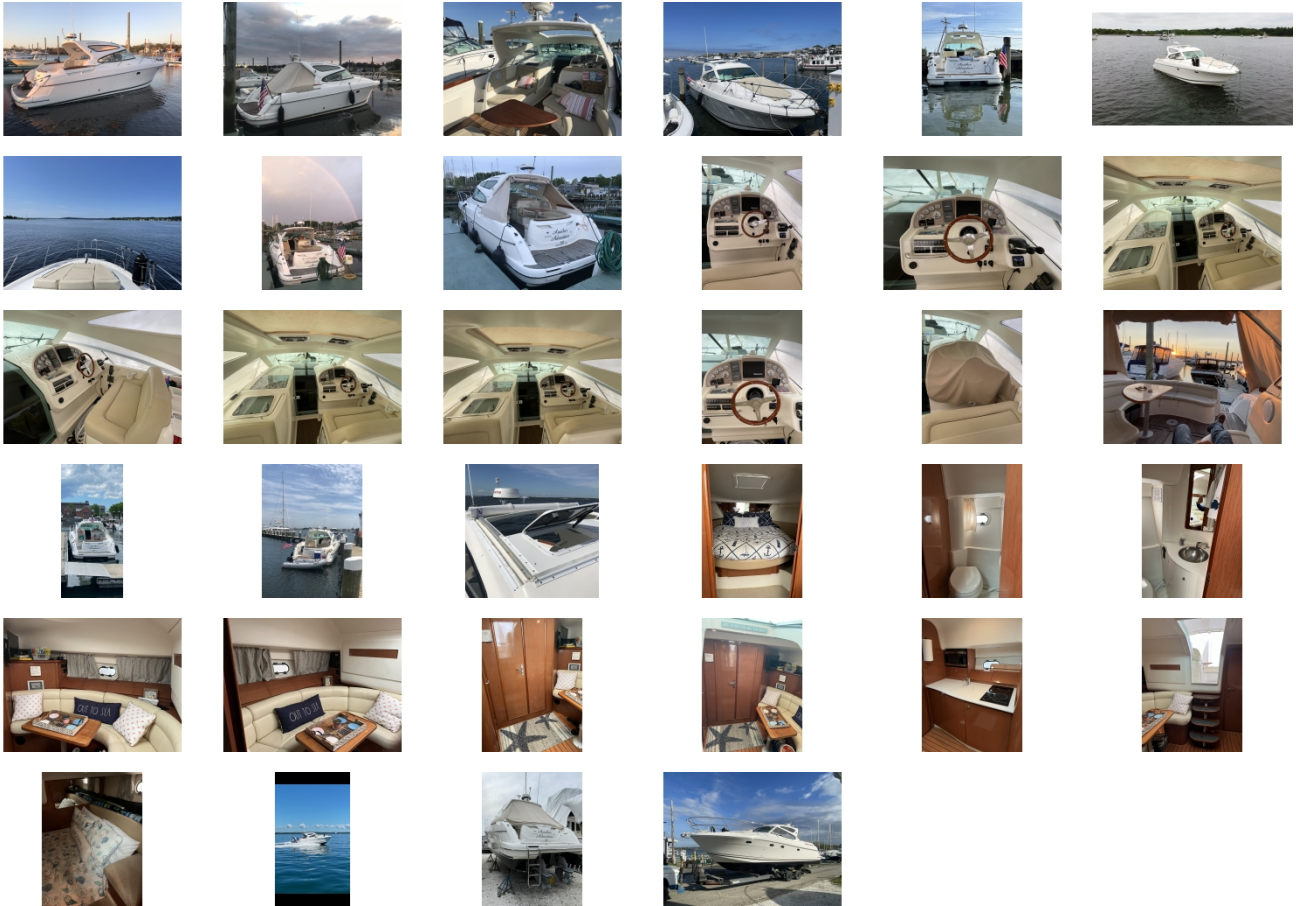
Accommodation

- Cherry interior with comfortable family accommodation for 4 / 6 in 3 cabins including saloon
- Forward cabin with double berth and deck hatch
- Separate head compartment to port with electric marine toilet and wash hand basin / shower
- Comfortable saloon settee in soft beige leatherette with good sized dinette arrangement to starboard (converts to double berth)
- Removable carpet over planked wood effect saloon flooring
- Cabin carpets
- Galley opposite with s/s sink, 2 burner Electric Stove, Goldstar microwave oven and Norcold fridge
- Aft cabin with double berth and deck / ventilation hatch
- Steps up to semi enclosed teak cockpit
- Double helm seat to starboard with Isotherm fridge under and chaise lounge / sunbed opposite
- Large aft seating area for 8 with 2 tables (converts into sun bed)
- Transom gate to integral teak swim platform with folding boarding ladder
- Very good stowage throughout boat including hanging wardrobes in fore / aft cabins, lockers under seats and large cockpit lazarette
- Cockpit Teak and swim platform Flooring

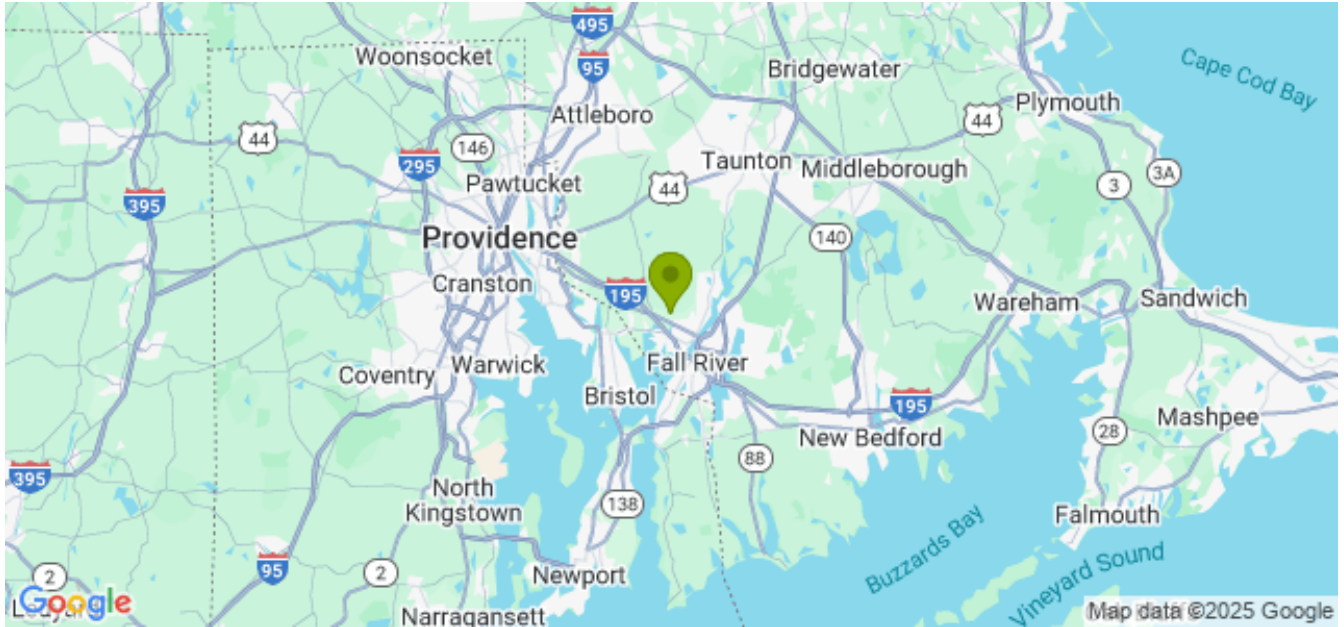
Equipment

- Cockpit cover and sunshade helm cover (2020)
- Telescopic boat hook
- Foredeck sun bathing cushions
- Anchor with chain and rode
- Rode and fenders

GALLERY



LOCATION MAP



American Marine & Boat Sales
The Power Boat Specialists

NICK KATSOULIS
 American Marine & Boat Sales
 58 R Merrimac St. 2nd floor
 Newburyport, MA, US
 Office: 978-462-2323
 Mobile: 978-462-2323
 nick@usedpowerboats.com