



American Marine & Boat Sales  
*The Power Boat Specialists*

**NICK KATSOULIS**  
American Marine & Boat Sales  
58 R Merrimac St. 2nd floor  
Newburyport, MA, US  
Office: 978-462-2323  
Mobile: 978-462-2323  
nick@usedpowerboats.com

# 2001 Grady-White 330 Express

Boat Type: Express

Address: Newburyport, MA, US

Price: \$109,900



## OVERVIEW

THIS BOAT IS EXTREMELY CLEAN AND READY FOR HER NEW OWNER . Your opportunity has arrived to own this vessel Just listed on 10/6 she will be in the water for only a few more weeks . She is loaded with all the best, reliable 2007 Yamaha power, Simrad (2) color chartplotter /fishfinder combo and Simrad radar and all the creature comforts that are available, including hardtop with full new enclosure, AC/heat, Bow Thruster windlass, AM/FM/CD stereo, outriggers and washdown/livewell. THIS IS A TURNKEY BOAT !!

Some Highlights :

- 2007 Yamaha Engine's ,Always Dealer Serviced
- Bow Thruster
- Simrad Electronic's
- Auto Pilot
- New eisenglass 2023
- Solar Panel with 2500 watt Inverter
- All Soft goods in excellent condition
- A/C / Heat
- Mooring Cover

Mechanical Note's :

- Fuel Filters , Oil and filters , Lower unit oil done Every Year
  - 2024 - Water Pumps , T-Stat's ,
  - 2023 New Enclosure
  - 2022 Water Pumps T-Stat's
  - 2021 Solar Panels , 4 Batteries , Injectors Re-built
  - 2020 Lower Unit seals replaced , Water Pumps and T stats , Shift and Throttle Cables replaced
  - 2019 vst Filters replaced
  - 2018 Water Pumps , Tilt seal
  - 2017 Props Tuned
  - 2016 Bottom Soda Blasted , Barrier Cote , New bottom paint
  - 2016 New Electronics' 12 inch and 9 inch screens with new Simrad vhf

## SPECIFICATIONS

### Basic Information

Manufacturer:	Grady-White	Vessel Name:	Karma Seas
Model:	330 Express	Boat Type:	Express
Year:	330 Express	Hull Material:	Fiberglass
Category:	Power	Hull Type:	Deep Vee
Condition:	Used	Hull Color:	white
Location:	Newburyport, MA, US	Designer:	
Available for sale in U.S. waters:	Yes	Flag of Registry:	

### Dimensions & Weight

Length:	33 ft - 10.06 meter	Draft - max:	1 ft 9 in - 0.53 meter
LOA:	35 ft 10 in - 10.92 meter	Bridge Clearance:	-
Beam:	11 ft 7 in - 3.53 meter	Dry Weight:	11000 ft - 3352.8 meter

## Engine

Make:	Yamaha	Engine Type:	Outboard
Model:	2007 F 250's	Drive Type:	
Engine(s):	2	Fuel Type:	Gas/Petrol
Hours:	750	Horsepower:	250 (Individual), 500 (combined)
Cruise Speed:	25 MPH	Max Speed:	34 MPH
Range:	-	Joystick Control:	No

## Tank Capacities

Fuel Tank:	350 gallons - 1 tank(s)	Holding Tank:	20 gallons - 1 tank(s)
Fresh Water Tank:	50 gallons - 1 tank(s)		

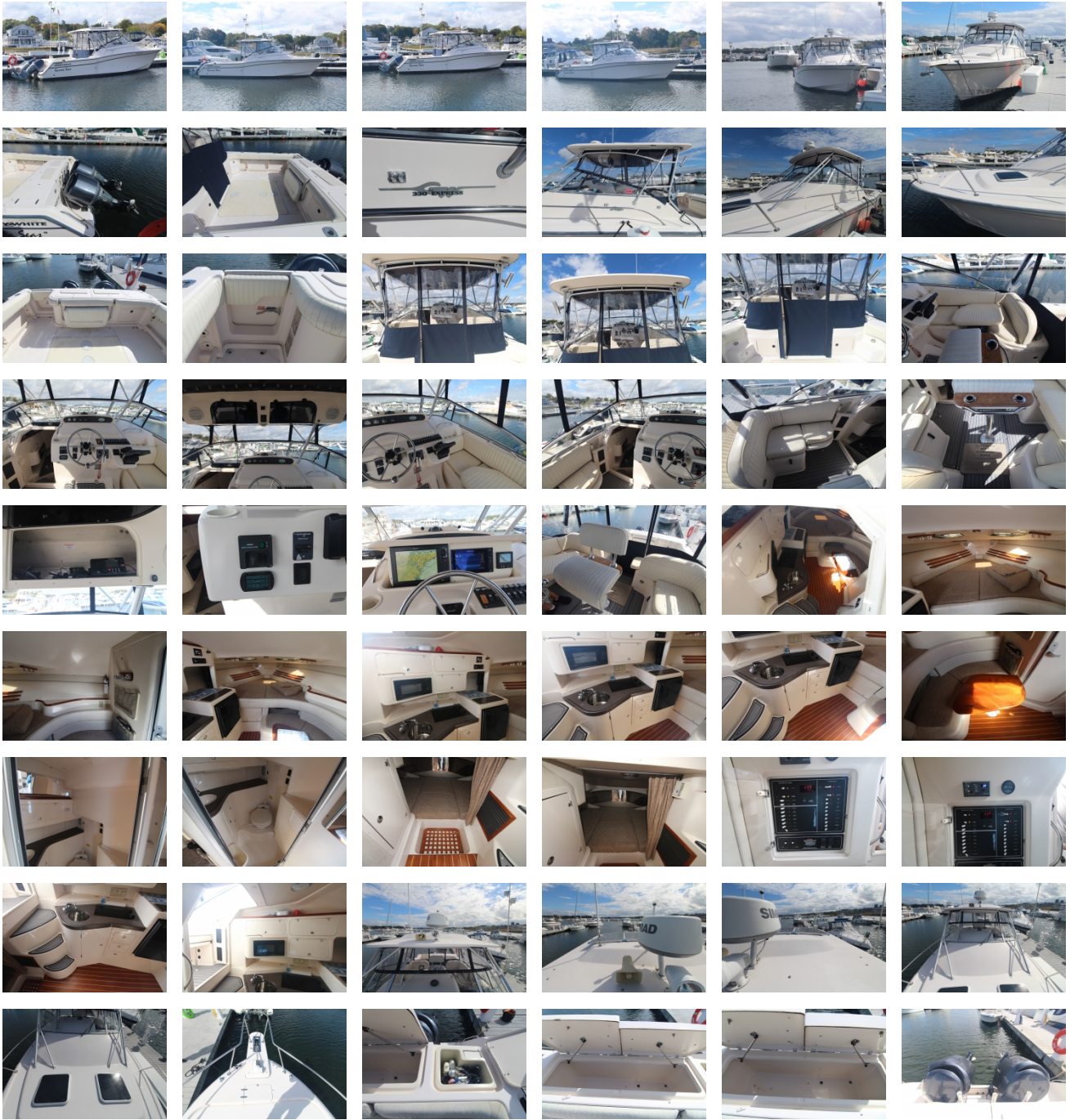
## Accommodations

Total Cabins:	1	Crew Cabins:	-
Total Berths:	-	Crew Berths:	-
Total Sleeps:	4	Crew Sleeps:	-
Total Heads:	1	Crew Heads:	-
Captains Cabin:	-		

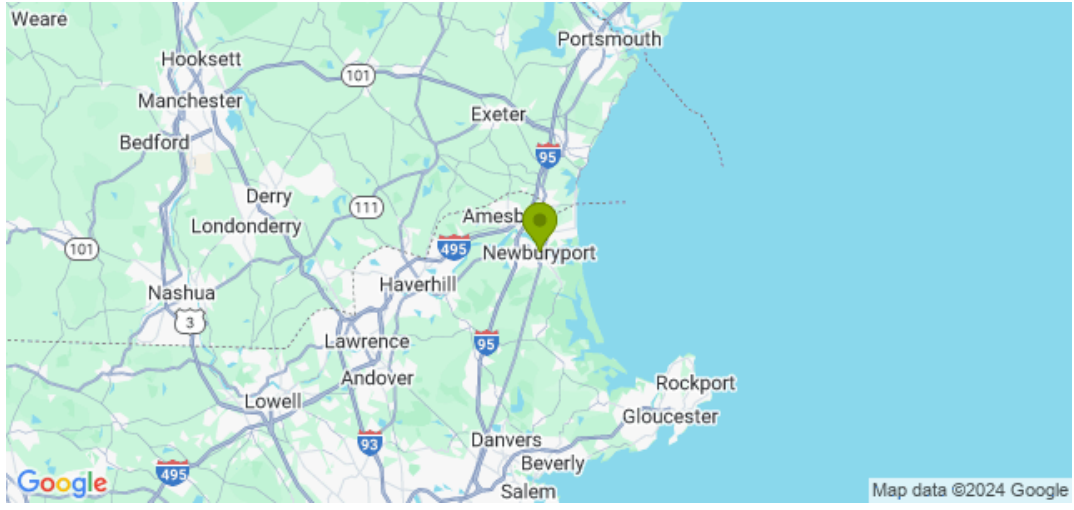
## DESCRIPTIONS

- Forward v-berth
- Aft double berth
- Port side galley w/sink, stove, microwave, refrigerator, storage
- Enclosed head w/sink, shower,
- ventilation and storage
- H/C pressurized water system
- AC/heat system
- Cabin lights
- Forward hatch curtains
- Forward hatch
- Vacu-flush head
- Rod storage racks
- Teak table
- Teak and holly sole
- 
- Inverter 2500 watt with solar Panels mounted on Hardtop
- Shore power with cable
- CD Stereo System
- 4 ba
  - Self bailing cockpit
  - Chrome over bronze thru hulls
  - Cockpit toe rail
  - Bow pulpit with roller
  - Windlass
  - 270 qt insulated fishbox
  - Center line helm
  - Electrically operated electronics enclosure
  - outriggers
  - Basic flotation
  - 316 SS Bow rail
  - Non skid deck
  - Cockpit lights
  - Cockpit bolsters
  - Cockpit shower
  - Compass
  - Hardtop w/full enclosure
  - Trim tabs
  - Intergrated swim platform and boarding ladder
  - 4 rod holders
  - Transom door
  - Raw water washdown
  - 45 gal livewel
-

# GALLERY



# LOCATION MAP





**American Marine & Boat Sales**  
*The Power Boat Specialists*

**NICK KATSOU LIS**  
American Marine & Boat Sales  
58 R Merrimac St. 2nd floor  
Newburyport, MA, US  
Office: 978-462-2323  
Mobile: 978-462-2323  
[nick@usedpowerboats.com](mailto:nick@usedpowerboats.com)

---