



American Marine & Boat Sales
The Power Boat Specialists

NICK KATSOULIS
American Marine & Boat Sales
58 R Merrimac St. 2nd floor
Newburyport, MA, US
Office: 978-462-2323
Mobile: 978-462-2323
nick@usedpowerboats.com

2000 Sea Ray 340 Sundancer

Boat Type: Express Cruiser

Address: Dracut, MA, US

Price: **\$59,995**



OVERVIEW

A clean, well maintained Sundancer. Forward stateroom open to the main cabin and a mid-stateroom aft which doubles as a daytime sitting area. Both have privacy curtains. Spacious cockpit has facing bench seats and wet bar for entertaining. Manifolds and Risers recently replaced . Too Large for owner , Open to reasonable offers .

Galley

- Refrigerator/Freezer
- 2 burner stove
- Microwave
- Corian Counter top

Electronics

- Engine Synchronizer
- Depth Finder
- VHF Radio
- Gps , chartplotter , depth finder
- Speed indicator
- Compass
- Fuel gauge
- Fume detector

Elec/Mech

- Westerbeke Generator 4.5 KW
- Fire system
- Battery charger
- Bilge pump
- CO detector
- Horn
- A/C - Heat pump
- Search light
- Hot water
- Pressure water
- Shore power
- Trim tabs
- Deck washdown
- Wipers

Deck

- Anchor
- Windlass
- Bow pulpit
- Bimini top / side curtains
- Slant back canvas
- New Cockpit carpet
- Fenders
- Swim platform

Additional Information

- Dockside water
- AM/FM stereo
- CD changer
- TV hook up
- Television
- Central Vacuum
- Wet Bar
- Cockpit shower
- Mooring cover
- Fire extinguisher

SPECIFICATIONS

Basic Information

Manufacturer:	Sea Ray	Vessel Name:	Monkey Face
Model:	340 Sundancer	Boat Type:	Express Cruiser
Year:	340 Sundancer	Hull Material:	Fiberglass
Category:	Power	Hull Type:	Modified Vee
Condition:	Used	Hull Color:	white
Location:	Dracut, MA, US	Designer:	
Available for sale in U.S. waters:	Yes	Flag of Registry:	

Dimensions & Weight

Length:	34 ft - 10.36 meter	Draft - max:	3 ft - 0.91 meter
LOA:	33 ft 6 in - 10.21 meter	Bridge Clearance:	-
Beam:	11 ft 5 in - 3.48 meter	Dry Weight:	13000 ft - 3962.4 meter

Engine

Make:	MerCruiser	Engine Type:	Inboard
Model:	7.4 L EFI	Drive Type:	V Drive
Engine(s):	2	Fuel Type:	Gas/Petrol
Hours:	620	Horsepower:	310 (Individual), 620 (combined)
Cruise Speed:	-	Max Speed:	-
Range:	-	Joystick Control:	No

Tank Capacities

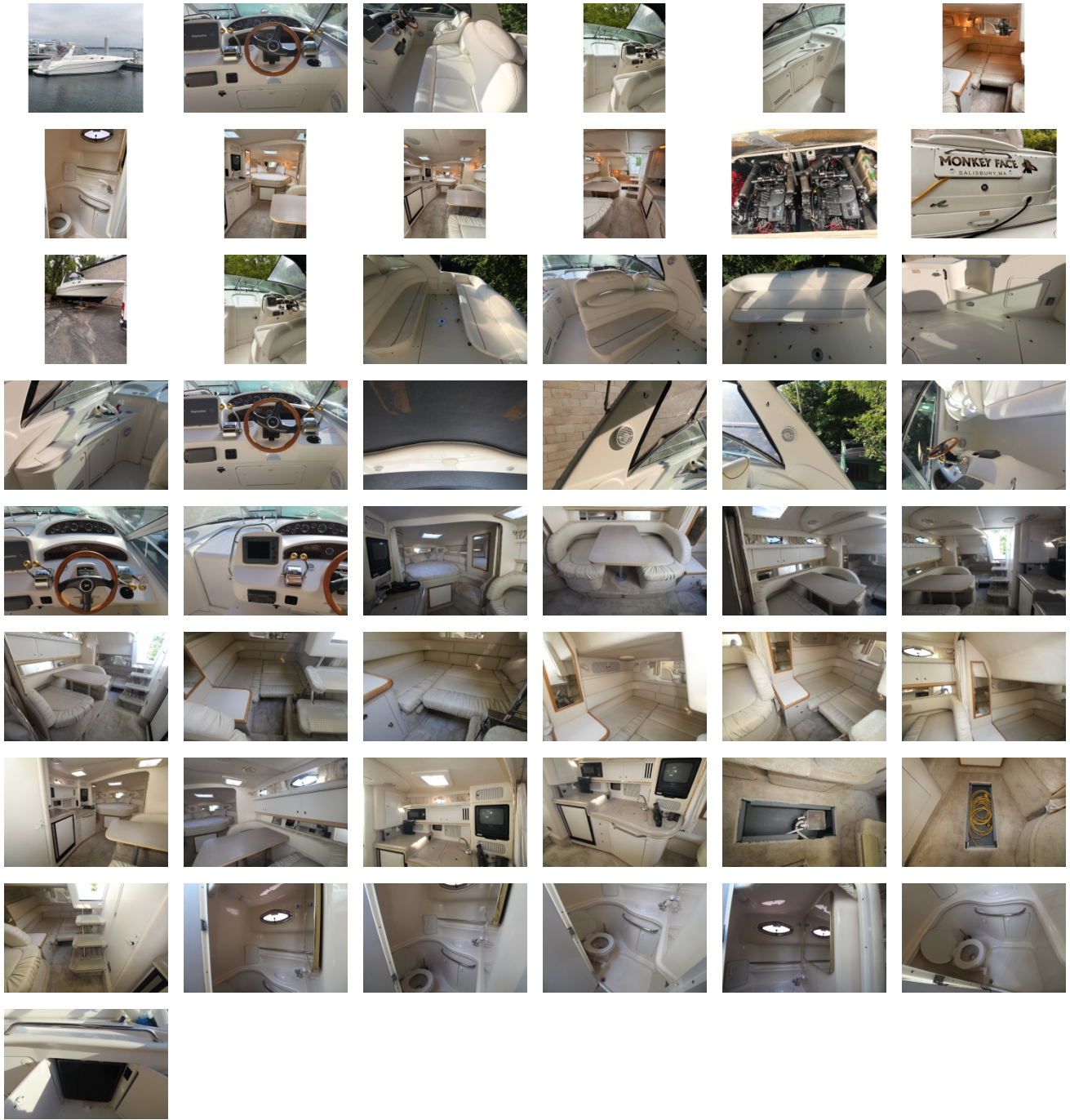
Fuel Tank:	225 gallons - 1 tank(s)	Holding Tank:	28 gallons - 1 tank(s)
Fresh Water Tank:	40 gallons - 1 tank(s)		

Accommodations

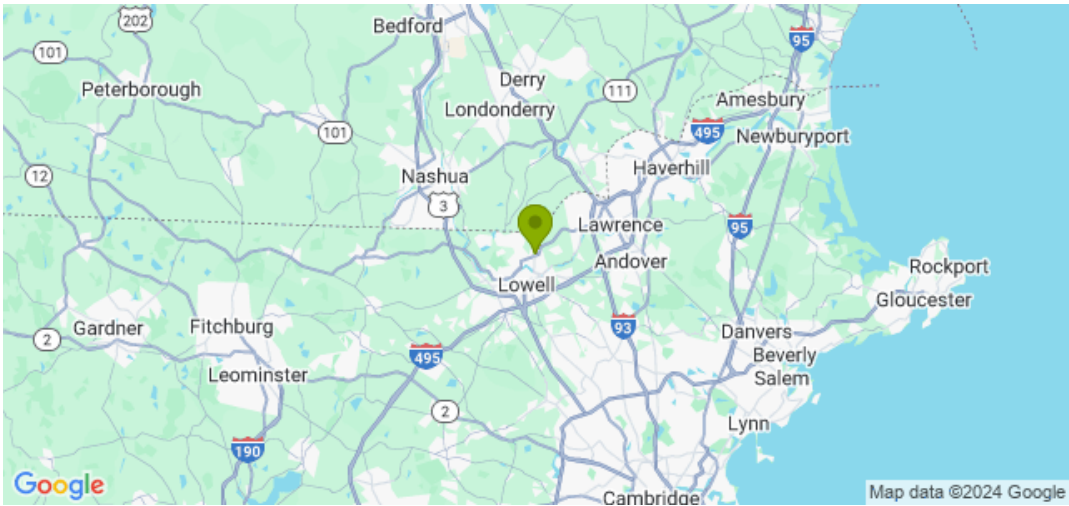
Total Cabins:	1	Crew Cabins:	-
Total Berths:	-	Crew Berths:	-
Total Sleeps:	5	Crew Sleeps:	-
Total Heads:	1	Crew Heads:	-
Captains Cabin:	-		

DESCRIPTIONS

GALLERY



LOCATION MAP





American Marine & Boat Sales
The Power Boat Specialists

NICK KATSOU LIS
American Marine & Boat Sales
58 R Merrimac St. 2nd floor
Newburyport, MA, US
Office: 978-462-2323
Mobile: 978-462-2323
nick@usedpowerboats.com
