



American Marine & Boat Sales  
*The Power Boat Specialists*

**NICK KATSOULIS**  
American Marine & Boat Sales  
58 R Merrimac St. 2nd floor  
Newburyport, MA, US  
Office: 978-462-2323  
Mobile: 978-462-2323  
nick@usedpowerboats.com

# 1977 Bertram 42 Convertible

Boat Type: Convertible Boat

Address: Newburyport, MA, US

Price: \$79,000





## OVERVIEW

This 1978 42' Bertram has been owned by the same owner for the past 35 plus years. It is powered with Detroit diesel engines that have been overhauled with 1950 hrs. She has a spacious 2 stateroom/1 head layout. Also, equipped with a Full Tower. Seller is looking for offers.

### Salon

- Spacious salon with lots of natural light
- Large port and starboard windows
- Sofa with sleeper
- (2) chairs
- Carpet
- Lighting
- Headliner
- CruiseAir A/C control
- Storage compartments
- Samsung flatscreen
- Overhead rod holders
- Entertainment center
- Large salon sliding door
- Window shades
- Engine access through floor
- Electrical panel

### Galley

- Maytag fridge/freezer
- Princess stove top
- Sunbeam microwave
- Carpet
- Stainless sink with faucet
- Storage compartments
- Drawer storage
- Lighting

### Master Stateroom

- V-Berth with filler
- CruiseAir A/C control
- Opening overhead hatch w/screen
- (2) opening port holes
- Anchor locker access
- Lighting
- Large closet
- Sink with faucet
- Drawer storage
- Marine Head
- Mirror

### Guest Stateroom

- (2) Crossover Bunks
- Storage closet
- Carpet
- Drawer storage
- Lighting

### Head

- Sink with faucet
- Mirror with vanity
- Cabinet
- marine head
- Separate shower stall
- Hardwood
- Overhead opening hatch with screen
- Towel rack

### Flybridge / Helm

- frame with soft top
- Bench seating next to helm for 2
- Helm captains chair
- Stainless steering wheel
- Forward bench seat with storage
- Gauges
- Dual controls
- Horn
- Trim tabs
- Engine synchronizer

### Electronics

#### Upper Helm:

- GPS
- (2) stereo speakers
- Horizon VHF
- Simrad Autopilot
- Richie Compass

### Mechanical and Electrical

- Twin Detroit 671's - diesel engines - 1950 hours Rebuilt
- Fuel filters
- Batteries
- Battery charger
- Seacocks
- (3) A/C units
- water pump

### Cockpit

- Ladder leading to flybridge
- Coaming pads
- Rod holders
- Cleats
- Storage compartments (port and starboard)
- Shore power plug in

### Deck

- Stainless bow rail
- Non skid
- Bertram black stripes
- Anchor with chain and rope
- Cleats

## SPECIFICATIONS

### Basic Information

Manufacturer:	Bertram	Vessel Name:	Lori Ann
Model:	42 Convertible	Boat Type:	Convertible Boat
Year:	42 Convertible	Hull Material:	Fiberglass
Category:	Power	Hull Type:	Deep Vee
Condition:	Used	Hull Color:	white
Location:	Newburyport, MA, US	Designer:	
Available for sale in U.S. waters:	Yes	Flag of Registry:	

### Dimensions & Weight

Length:	42 ft - 12.8 meter	Draft - max:	4 ft - 1.22 meter
LOA:	42 ft 6 in - 12.95 meter	Bridge Clearance:	-
Beam:	14 ft 10 in - 4.52 meter	Dry Weight:	39000 ft - 11887.2 meter

### Engine

Make:	Detroit Diesel	Engine Type:	Inboard
Model:	671	Drive Type:	Direct Drive
Engine(s):	2	Fuel Type:	Diesel
Hours:	1950	Horsepower:	-
Cruise Speed:	16 MPH	Max Speed:	20 MPH
Range:	-	Joystick Control:	No

### Tank Capacities

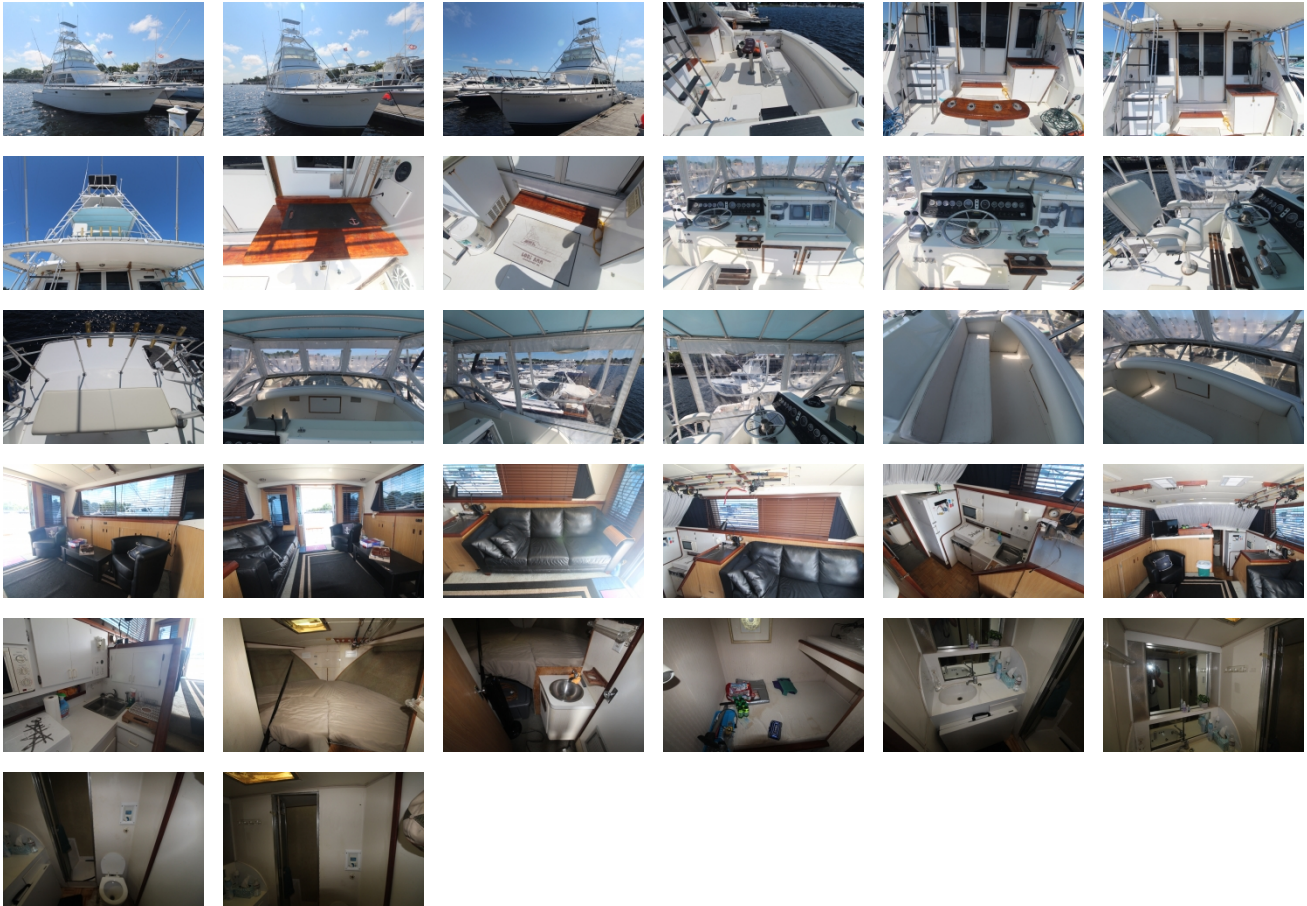
Fuel Tank:	488 gallons - 1 tank(s)	Holding Tank:	-
Fresh Water Tank:	150 gallons - 1 tank(s)		

### Accommodations

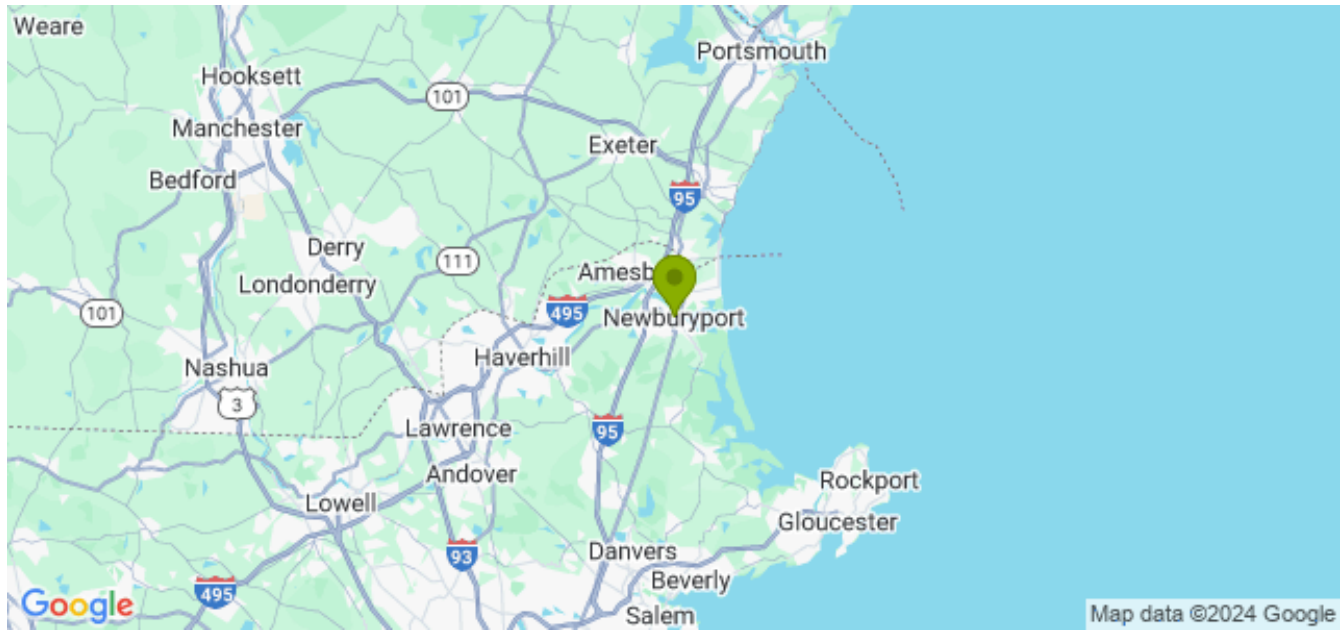
Total Cabins:	2	Crew Cabins:	-
Total Berths:	-	Crew Berths:	-
Total Sleeps:	5	Crew Sleeps:	-
Total Heads:	1	Crew Heads:	-
Captains Cabin:	-		

## DESCRIPTIONS

## GALLERY



## LOCATION MAP



**American Marine & Boat Sales**  
*The Power Boat Specialists*

**NICK KATSOULIS**  
American Marine & Boat Sales  
58 R Merrimac St. 2nd floor  
Newburyport, MA, US  
Office: 978-462-2323  
Mobile: 978-462-2323  
nick@usedpowerboats.com