



American Marine & Boat Sales  
*The Power Boat Specialists*

**NICK KATSOULIS**  
American Marine & Boat Sales  
58 R Merrimac St. 2nd floor  
Newburyport, MA, US  
Office: 978-462-2323  
Mobile: 978-462-2323  
nick@usedpowerboats.com

# 1999 Mainship 31 Sedan Bridge

Boat Type: Convertible Boat

Address: Danvers, MA, US

Price: \$39,995



## OVERVIEW

Good looking, stylish profile with a large flybridge layout with walk down molded in steps from bridge to foredeck, huge spacious one level 2 stateroom interior,,good size cockpit with molded in bench seating port and starboard,,the 31 MAINSHIP SEDAN BRIDGE has it all in an unbelievably well layed out 31 foot boat. Probably the largest open interior layout that you'll ever find in a 31 foot boat. This boat features air conditioning/heat; full electronics including Radar,,Garmin GPS,VHF Radio,Depth finder/fish finder; full enclosure; swim platform; anchor windlass; stereo etc. Sleeping accommodations for 6 at a terrific price !

***Crusader Re-Power FWC With only! 39 hours !!!!***

## SPECIFICATIONS

### Basic Information

Manufacturer:	Mainship	Vessel Name:	Bella Pazz
Model:	31 Sedan Bridge	Boat Type:	Convertible Boat
Year:	31 Sedan Bridge	Hull Material:	Fiberglass
Category:	Power	Hull Type:	Modified Vee
Condition:	Used	Hull Color:	white
Location:	Danvers, MA, US	Designer:	
Available for sale in U.S. waters:	Yes	Flag of Registry:	

### Dimensions & Weight

Length:	31 ft - 9.45 meter	Draft - max:	2 ft 10 in - 0.86 meter
LOA:	33 ft 3 in - 10.13 meter	Bridge Clearance:	-
Beam:	11 ft 10 in - 3.61 meter	Dry Weight:	16000 ft - 4876.8 meter

### Engine

Make:	Crusader	Engine Type:	Inboard
Model:	350	Drive Type:	V Drive
Engine(s):	2	Fuel Type:	Gas/Petrol
Hours:	39	Horsepower:	290 (Individual), 580 (combined)
Cruise Speed:	22 MPH	Max Speed:	30 MPH
Range:	-	Joystick Control:	No

### Tank Capacities

Fuel Tank:	200 gallons - 1 tank(s)	Holding Tank:	30 gallons - 1 tank(s)
Fresh Water Tank:	50 gallons - 1 tank(s)		

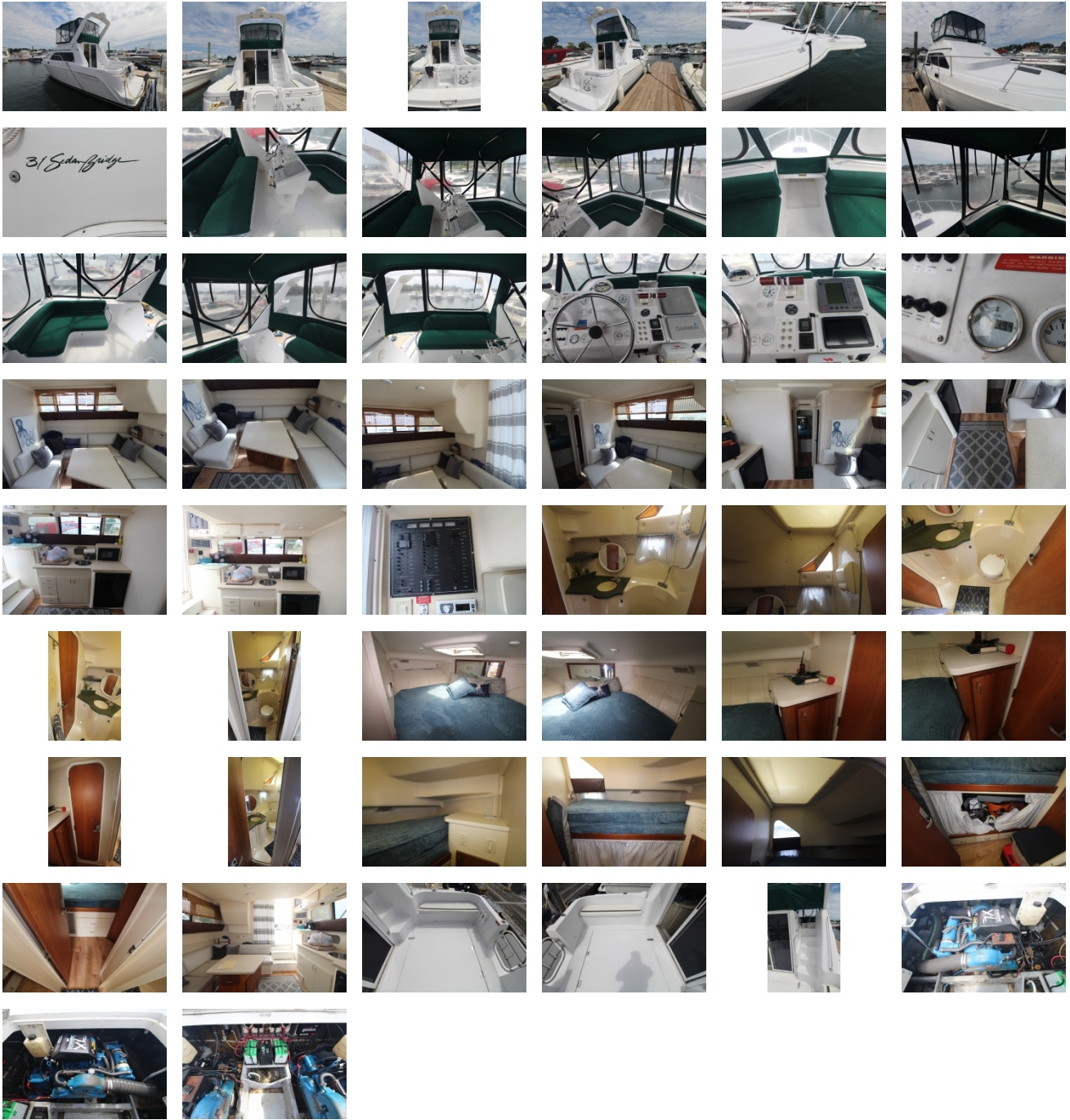
### Accommodations

Total Cabins:	1	Crew Cabins:	-
Total Berths:	-	Crew Berths:	-
Total Sleeps:	6	Crew Sleeps:	-
Total Heads:	1	Crew Heads:	-
Captains Cabin:	-		

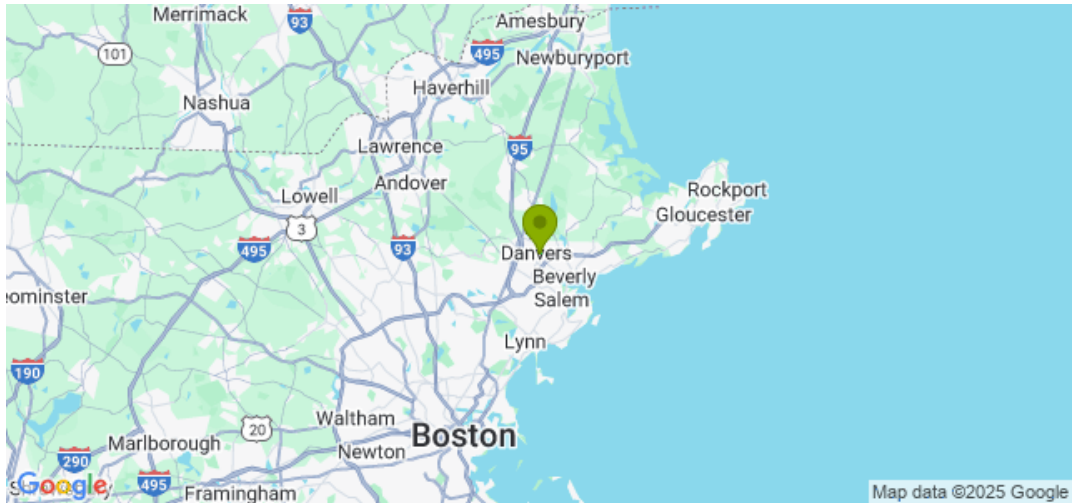
### DESCRIPTIONS

AS you enter the salon through a glass slider immediately to starboard is a large -shaped convertible settee; across to port is the galley with 110/12V refrigerator;2 burner stovetop and microwave oven; forward to starboard is the head with 2 separate entrances, one to the private forward cabin and the other to the companionway; the head is good size and features a vanity and toilet; across to port is the second stateroom with upper/lower bunks; the forward stateroom has a large semi-round queen berth, privacy door and private entrance to the head; interior is in excellent condition and very open and bright

# GALLERY



# LOCATION MAP





**American Marine & Boat Sales**  
*The Power Boat Specialists*

**NICK KATSOULIS**  
American Marine & Boat Sales  
58 R Merrimac St. 2nd floor  
Newburyport, MA, US  
Office: 978-462-2323  
Mobile: 978-462-2323  
[nick@usedpowerboats.com](mailto:nick@usedpowerboats.com)

---