



American Marine & Boat Sales  
*The Power Boat Specialists*

**NICK KATSOULIS**  
American Marine & Boat Sales  
58 R Merrimac St. 2nd floor  
Newburyport, MA, US  
Office: 978-462-2323  
Mobile: 978-462-2323  
nick@usedpowerboats.com

# 2014 Sea Ray 350 Sundancer

Boat Type: Express Cruiser

Address: Newburyport, MA, US

Price: \$215,000





## OVERVIEW

### 2014 Sea Ray 350 Sundancer - LIBERTAS

The Sea Ray 350 Sundancer has perfected the use of space on deck and below in this 35' express. The cockpit converts from a social seating area to a sun pad. Forward the raised helm deck has a double bench/lounge to port, helmsman and companion seats and ergonomic console with advanced electronics including joystick maneuvering, first-class amenities start with the island-style bed and gorgeous salon. Aft of the salon is an open mid-berth area suitable for lounging to watch tv or sleeping for two.

Engine Year - 2014

Engine Hours - Approximately 476 Each engine Power - 380 hp

Key Features:

Twin MerCruiser 8.2L MAG MPI 380 hp - Approximately 476 hours Bravo III Stern Drives

Axius Helm Joystick Control SmartCraft Diagnostics

Extended Swim Platform with Hurley Davit System Foredeck sun pad with Deck Rails

RayMarine HD Color Radar

Kohler Skw Generator (Less than 100 Hours) / 0 hrs. since 2023 critical component rebuild.

Ocean LED Underwater Lights

Measurements:

Cruising Speed - 26 kts

Max Speed - 35 kts

LOA - 35ft 6 in (before extended swim platform) Beam - 11 ft 6 in

Min. Draft - 2 ft 6 in Max Draft - 3 ft 4 in Dry Weight - 15,780 lb Seating Capacity - 10 Deadrise at Tansom - 21 Fuel Tanks - 2

Fuel Tank Capacity - 220 gal Fresh Water Tank - 1 (40 gal) Holding Tank - 1 (28 gal) Number of single berth - 2 Number of cabins - 2 Number of heads - 1

Propulsion:

Engines - 2

Make - MerCruiser

Model - 8.2 MAG ECT 380hp AXIUS BR III

Primary Engines - Inboard/Outboard Drive Type - Stern Drive

Arrangement Plan:

The Sundancer series is known for its classic mid-cabin arrangement cleverly utilizing the space beneath the elevated helm for flexible use. The master cabin is forward with offset queen berth, privacy is via a fabric room divider. The salon and gallery occupy the amidships area. The enclosed head is after to port and quest cabin aft with privacy curtain.

Salon

● Soft, port & starboard

● Urethane Table with solid wood with dedicated storage

● Wood Interior Package Chestnut Wood - Finish Cabinets

● Steps, cabin entry w/ teak treads & non-slip inlays

● Storage, gunwale cabinets

● Deck fixed lights w/ black out inserts

● Lighting, 12v

● Carbon Monoxide Monitor

● Wood Flooring

● Outlets, 120v GFI Protected

● Shades, pleated

● Storage, in floor

● ACDC electrical distribution panels

Entertainment

● TV, flatcreen w/ remote DVD player, Gaming System Port & Gait Control

● Stereo, Harmon Kardon 12V AM/FM single CD w/iPhone connector, amplifier, speakers (8)

● (6) 8 Inch Speakers Replaced June of 2020

Cabin

● Refrigerator, dual-voltage

● Microwave 120v/60 cycle

● Stove, 120v two burner pups

● Countertop, solid surface

● Lighting 12v

● Power vent, 12v

● Storage- drawers & upper and lower lockers

● Trash receptacle

● Sink w/ hot/cold water

Domestic Systems

● NEW IN 2022 - Water heater - 6 gallon

● Pressure water system w/12vdc pump

● Freshwater washdown spigt

● Cockpit shower

● Water inlet, dockside

● Water manifold system

● Water tank - 40 gal

Master Cabin

The offset modified queen berth is in the bow and can remain open to the salon or enjoy privacy via a soft enclosure. This area offers an overhead deck hatch and fixed skylights to invite the sun or moonlight to shine down. Also, in the space are mirrors, storage lockers and fixed port lights. This unique layout makes for optimum enjoyment of the boat for a couple yet

provides privacy when family or guests stay over.

● Deck hatch, opening w/ screen and solar panel

● Hull portlights

● Deck fixed lights with black out inserts

● Hanging lockers

● Storage lockers

● Mirror

Guest Cabin

● Dual twin bunk/berths - convert to double berth w/slido-out base & filler.

● Curtain, privacy concealed in compartment.

● Mirrored bulkhead

● Cushioned storage

● Port settee

● Hanging locker

● Upper and lower lockers

Head Compartment

● Vanity w/ sink, solid-surface countertop

● Faucet w/outlet sprayer

● VacuFlush Marine Toilet

● Flooring - Simulated teak

● Handrail, stainless steel

● Mirror on door

● Mirror on wall

● Power vent, 12v

● Storage, medicine cabinet

● Storage, locker under sink

Domestic Systems

● Holding tank - 28 gal

● Holding tank level indicator

● Grey water sump box

Cockpit & Deck

● NEW IN 2023 - DuraWeave Snap In Carpets with padding

● NEW IN 2023 - Blue LED cockpit lighting

● NEW IN 2023 - Full Canvas restoration (replacement of all StrataGlass, zippers, snaps & bungee)

● Tansom door

● Tansom storage

● Cockpit table teak w/ dedicated storage & sun pad filler cushions

● Seating, Port C-chaise - converts to sun pad

● Port lounge seat

● Helm bench seat w/dual flip-up bolsters

● Adjustable captain's seat & fiberglass storage base

● Windshield, tempered/tinted curved glass

● Beverage holder (10)

● Cooler, carry-on w/ designated storage

● Cabin entry door (sliding & lockable) fiberglass with integral steps

● Engine room hatch

● Outlet, 120v GFI protected

● Outlet, 12v accessory

● Sport Spoiler, molded fiberglass

● Boarding steps

● Storage, side panel

● Wet bar Deck

● NEW IN 2023 - Windless solenoid switch replaced

● Gel coat, arctic white

● Graphics, striping - black

● Anchor chule w/ anchor rope/chain storage

● Anchor galvanized

● Windlass w/ foot switches

● Bow & Stern Eyes, stainless steel

● Bow rail, stainless steel

● Bow sun pad with Sunbrella Black Cover

● Full Enclosure, Black Sunbrella w/ aerglass window

● Chests, custom Sea Ray 10' (8)

● Deck Fill Plates

● Drain Plug, brass-threaded

● Handrails, stainless steel

● Hatch, deck vent

● Rub Rail, PVC w/stainless steel insert

● Skylights (2)

● Thru-hull fittings stainless steel

● Vent system, engine room

Helm & Electronics

● NEW IN 2023 - Mercury Engine GPS Receiver Replacement

● SmartCraft Diagnostics

● SmartCraft Digital Throttle & Shift (DTS)

● Axius Joystick control with skyhook

● Steering, power Assisted w/leather wrapped tilt wheel

● Switch pads

● Power IR & Trim

● Dedicated electronics circuit, 30 amp

● VHF radio Raymarine 55 "Chanel change from mic handset only

● GPS Color Plotter/Radar Raymarine E7

● Radar

● Alarms, high-water: bilge & cabin

● Compass

● Emergency start system

● Windshield wipers

● Horn

● Remote spotlight control, bow mounted.

● Instrument Panel

● Stereo Digital Cockpit Remote Control

Electrical System

● NEW IN 2023 - Key Components replaced - Kohler Skw Generator

● NEW IN 2023 - 2 house & 2 crank batteries (AMG SZAH 27)

● Battery Charger/Converter 120v/60 cycle

● Battery Switches (2)

● Breaker Panels, waterproof

● Galvanic Isolator

● Mercathode II

● Breaker Panel, DC

● Main Distribution Panel - AC

● Distribution Panel - DC

● Shore Power, 30 amp/120v/60 cycle (2)

● Light, Stern

● Navigation Lights

● Air Conditioning/Heat Reverse Cycle - 12,000 BTU

Mechanical & Engine Room

● NEW IN 2022 - Manifold & Risers + Critical Components (see MarineMax W0205788)

● Twin MerCruiser 8.2L Mag MPI 380hp v8

● Bravo III Drives

● Fuel Tank, Aluminum

● Fuel Lines - USCG Type A-1

● Oil Filter - remote

● Bilge Pump, 12v Automatic

● Bilge Pump, 12v Automatic High water 1 bilge, 1 cabin

● Blower, 12v bilge (2)

● NEW 2023 - Fire suppression system - FM200 - Automatic

● Insulation, Engine Room - 2"

● Lighting, 12v

Hull

● Swim Platform

● Extended Swim Platform

● Swim Ladder

● Hurley Davit System

● Hull Windows, Extra Large - Fixed (2)

● Hull laminate high-performance Vinylester resin

● Bravo III Drives w/ stainless propellers

● Bottom Paint

● Ocean LED Underwater Lights

Safety

● Dock Lines (6)

● Fenders (3)

● PFD's (6)

● Flare Kit

● Fire Extinguisher (3)

● Meets applicable USCG & ABYC standards.

● NIMA Certification

## SPECIFICATIONS

### Basic Information

Manufacturer:	Sea Ray	Vessel Name:	Libertas
Model:	350 Sundancer	Boat Type:	Express Cruiser
Year:	350 Sundancer	Hull Material:	Fiberglass
Category:	Power	Hull Type:	
Condition:	Used	Hull Color:	white
Location:	Newburyport, MA, US	Designer:	
Available for sale in U.S. waters:	Yes	Flag of Registry:	

### Dimensions & Weight

Length:	35 ft - 10.67 meter	Draft - max:	3 ft 3 in - 0.99 meter
LOA:	35 ft 6 in - 10.82 meter	Bridge Clearance:	-
Beam:	11 ft 6 in - 3.51 meter	Dry Weight:	18000 ft - 5486.4 meter

### Engine

Make:	MerCruiser	Engine Type:	Inboard / Outboard
Model:	8.2 Mag MPI	Drive Type:	Stem Drive
Engine(s):	2	Fuel Type:	Electric
Hours:	480	Horsepower:	380 (Individual), 760 (combined)
Cruise Speed:	-	Max Speed:	-
Range:	-	Joystick Control:	No

### Tank Capacities

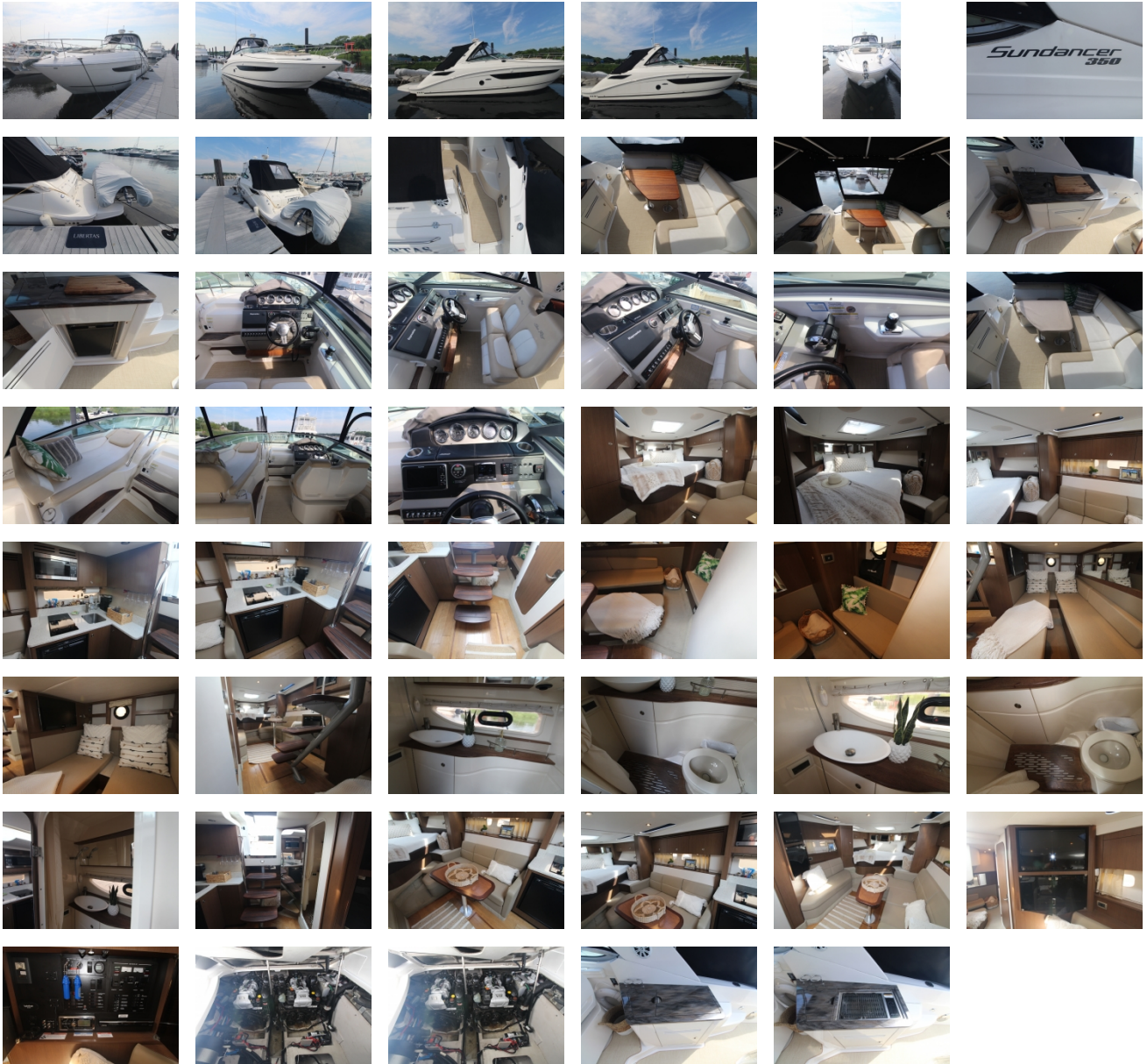
Fuel Tank:	225 gallons - 1 tank(s)	Holding Tank:	28 gallons - 1 tank(s)
Fresh Water Tank:	40 gallons - 1 tank(s)		

### Accommodations

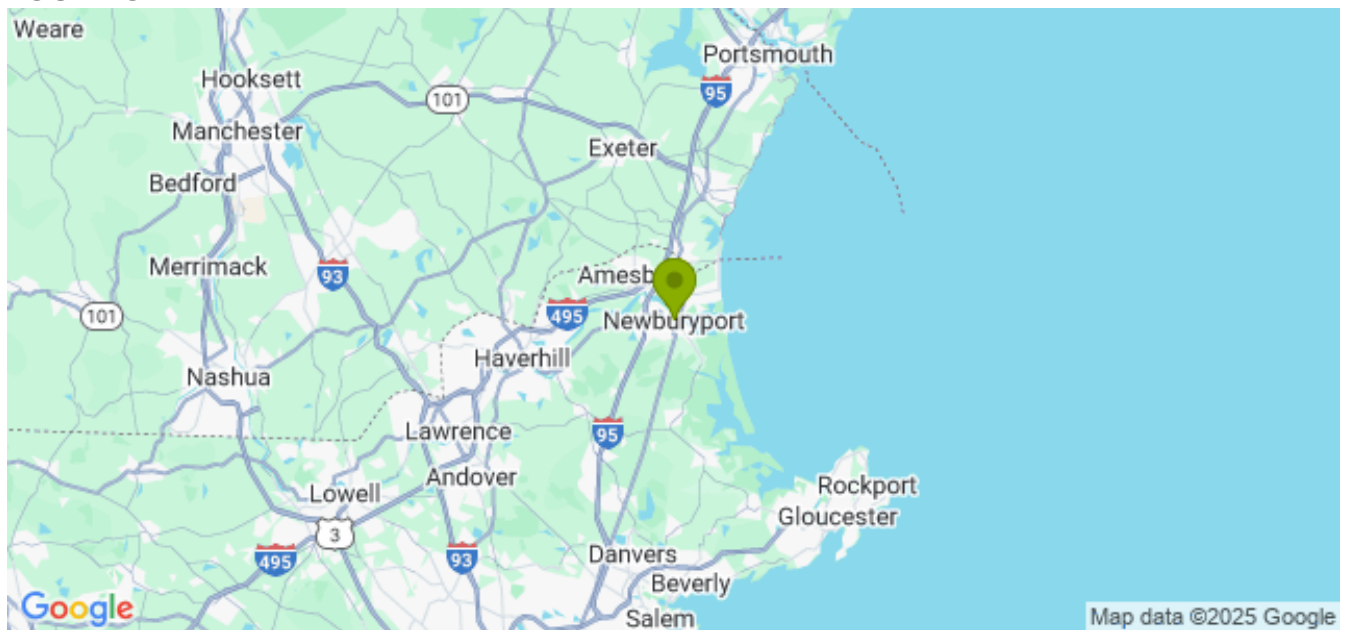
Total Cabins:	1	Crew Cabins:	-
Total Berths:	-	Crew Berths:	-
Total Sleeps:	4	Crew Sleeps:	-
Total Heads:	1	Crew Heads:	-
Captains Cabin:	-		

## DESCRIPTIONS

# GALLERY



# LOCATION MAP





**American Marine & Boat Sales**  
*The Power Boat Specialists*

**NICK KATSOU LIS**  
American Marine & Boat Sales  
58 R Merrimac St. 2nd floor  
Newburyport, MA, US  
Office: 978-462-2323  
Mobile: 978-462-2323  
[nick@usedpowerboats.com](mailto:nick@usedpowerboats.com)

---